



Find out whether you have mathematical thinking, communication skills, a musical ear or sporting talent!

Eight special stations from various fields of human endeavor reveal your strengths and weaknesses. You can further develop your abilities and it depends entirely on you which direction your focus on in the future.

At the start of the exhibition you will get a unique QR code which you activate in the "Central Brain Exhibition" and you can start discovering your talent.

### What awaits you in the stations?

- learn about the lives and works of prominent world figures who excelled in the given area
- take a topical quiz
- try out your skills on the exhibits



# A

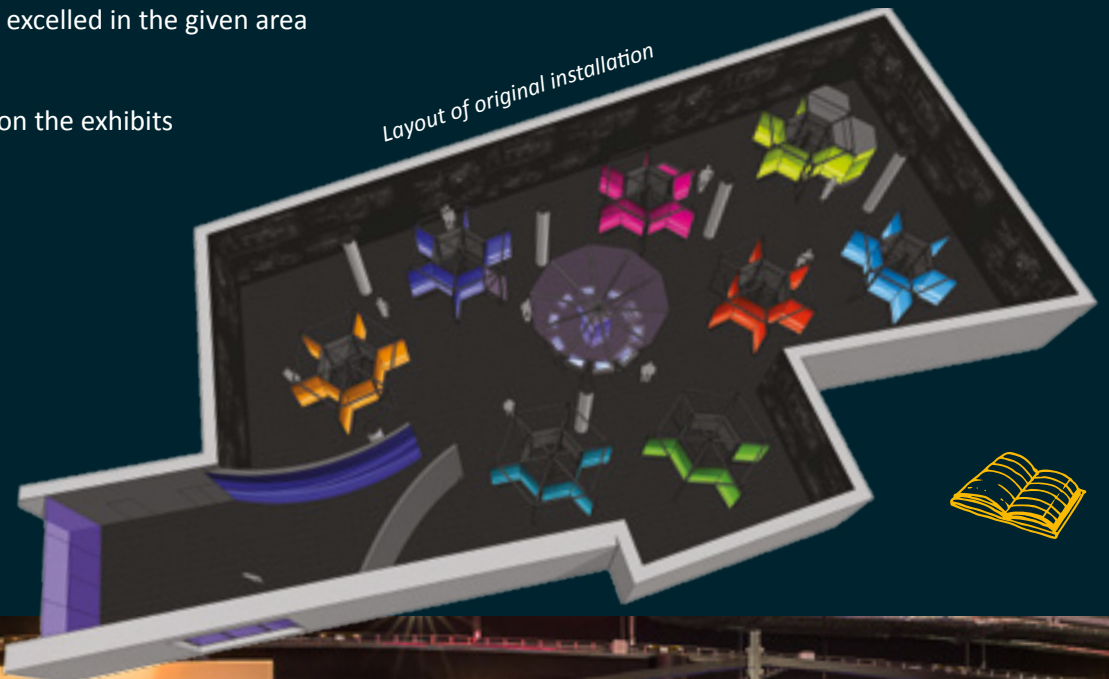


### Focus on the humanities

- A1 memory test  
*training memory of signs using Kim's game*
- A2 synonym  
*matching words of similar meaning*
- A3 what came first; compiling a timeline of milestones from world history  
*figures, battles, discoveries*

### Profiles of prominent figures

J. K. Rowling, Plato, J. A. Comenius, J. Pulitzer, T. G. Masaryk, J. Paul II.



# B



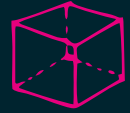
## Dexterity

- B1 Buzz wire  
*guiding the loop without it touching the wire*
- B2 Knots  
*making a braid from string*
- B3 Labyrinth  
*moving a ball around a maze*
- B4 Beads on a stick  
*threading as many beads of various shapes as possible*
- B5 Embroidery  
*embroidery patterns on metal warp*

## Profiles of prominent figures

G. Versace, C. Chanel, I. F. Kamprad, F. Lamborghini,  
J. Choo, Confucius, E. Ferrari

# C

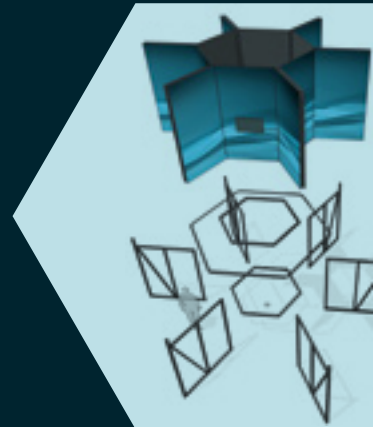
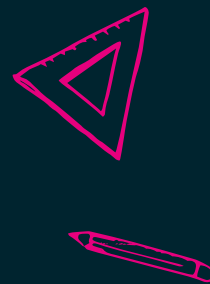


## Technical disposition

- C1 build a tower  
*build the highest and most stable tower you can*
- C2 center of gravity  
*finding the center of gravity of the depicted body*
- C3 navigation  
*guiding a robot along a path*
- C4 spatial puzzle  
*fitting pieces into a 3D shape*
- C5 distance  
*estimating distance*

## Profiles of prominent figures

A. Citroën, K. Benz, S. Jobs, S. Wozniak, L. da Vinci,  
T. A. Edison, P. Spencer, J. Goodfellow,  
Laurin & Klement.



# D



## Artistic leanings

- D1 art of composition  
*finding the golden ratio in photography*
- D2 dance  
*copying sets of movements from a video clip*
- D3 Mozarteum  
*copying a recorded melody*
- D4 musical ear  
*playing a melody on a virtual keyboard*
- D5 mime  
*miming facial expressions from a video clip*

## Profiles of prominent figures

B. Smetana, W. A. Mozart, J. Carrey, M. Jackson, P. Picasso, J. Werich, F. L. Wright, M. Buonarroti

# E



## Physical ability

- E1 catch it  
*reaction test*
- E2 balance board
- E3 jump  
*measuring the height of a jump*
- E4 hanging on a rope  
*measuring endurance hanging on a rope*
- E5 strongman  
*measuring the force of a hammer blow*

## Profiles of prominent figures

E. Zátopek, J. Jágr, M. Jordan, U. Bolt, E. Weihenmayer, M. Giroux, M. Navrátilová



# F

## Sense of justice and communication

- F1 events  
*creating a timeline for a comic story by logically connecting causes and effects*
- F2 describing game  
*describing depicted objects*
- F3 judge  
*decide who the culprit is after reading a microstory*
- F4 reporter  
*commentating on a football match or a fashion show*
- F5 microstory  
*subjective evaluation of a submitted story*

## Profiles of prominent figures

V. Havel, M. L. King, Seneca, M. Gándhí

# G



## Passion for nature

- G1 how it feels in a dumpster  
*trying out a short stay in a dumpster*
- G2 shopping  
*choice of options and steps when shopping – routine or conscious decision?*
- G3 recognize them?  
*identification of sounds and their sources*
- G4 are you in touch with nature?  
*revealing your own attitudes to nature*

## Profiles of prominent figures

G. Nelson, C. Limé, W. Maathai, L. Pasteur, G. Galilei, L. DiCaprio



# H

## Exact thinking

- H1 I think, therefore I am  
*detecting abilities of logical thinking using simple mathematical tasks*
- H2 differences  
*comparing figures and focusing on their differences*
- H3 mathematical minimum  
*completing numerical series*

## Profiles of prominent figures

S. Hawking, A. Einstein, O. Wichterle, M. Faraday

# CB

## Central brain

Evaluating the quizzes using the QR code.

The well-known Czech psychologist Tomáš Rodný, who specializes in counseling related to the selection of suitable studies and professions, was consulted during the development of the exhibition.

Most exhibits are connected to evaluation software, which assesses which field of expertise you excel at on the basis of your success in fulfilling the tasks. Tasks are divided into three levels according to age. The minimum age limit for completing evaluation is eight years old. After completing all the stations your measurable results will be sent to your e-mail address.



# INFORMATION ON THE EXHIBITION



## Area

350 – 500 m<sup>2</sup>  
*without requirements for the shape of the room*

## Height

min. 3 m

## Number of exhibits

- 8 stations anchored on self-standing panels  
central brain
- 28 built-in quiz screens, 15 interactive exhibits,  
3 graphic items on walls/panels

## Language versions

English, German, Polish and Czech

## Requirements

230 V, network connectivity

## Packing

- **Volume**  
53 m<sup>3</sup>
- **Weight**  
10,000 kg
- **Access doors for installation  
and uninstallation**  
2,000 × 2,100 cm (width × height)
- **Insurance value**  
592,600 EUR

## Installation and uninstallation

- in both cases 1 week
- 2 persons provided by the supplier for installation and training and subsequent uninstallation
- 3 persons provided by the partner for installation and training and subsequent uninstallation

## Safety precautions

low, self-service operation

## Target audience

general public, schools and especially students  
from 10 years old

## Length of lease

min. 3 months

## Recommendation

- operation staffed by 1 employee
- higher demands on knowledge of technical maintenance, especially with knowledge of IT and AV equipment

## Price of lease

contact [sales@iQlandia.cz](mailto:sales@iQlandia.cz)



iQLANDIA

## Contact

iQLANDIA, o. p. s.  
Nitrianská 410/10  
46003 Liberec, Czech Republic  
e-mail: [sales@iQlandia.cz](mailto:sales@iQlandia.cz)  
[www.iQlandia.cz](http://www.iQlandia.cz)